

Cavity tray Type G900 to be linked to lead flashing (lead tucked min. 25mm into mortar bed) & tray upstand linked to internal blockwork as per NHBC 6.1 D6 (b). NOTE: Insulation must be carefully cut to ensure continuous insulation thickness to eliminate potential cold bridge.

Weep holes to be provided spaced at maximum 450mm c/s.

Celcon block, traditional mortar, top course cut to maintain coursing of outer leaf.

Fibreglass quilt roof insulation between and over bottom chord of roof truss, ensuring the insulation abuts underside of roof vent and covers the eaves insulation

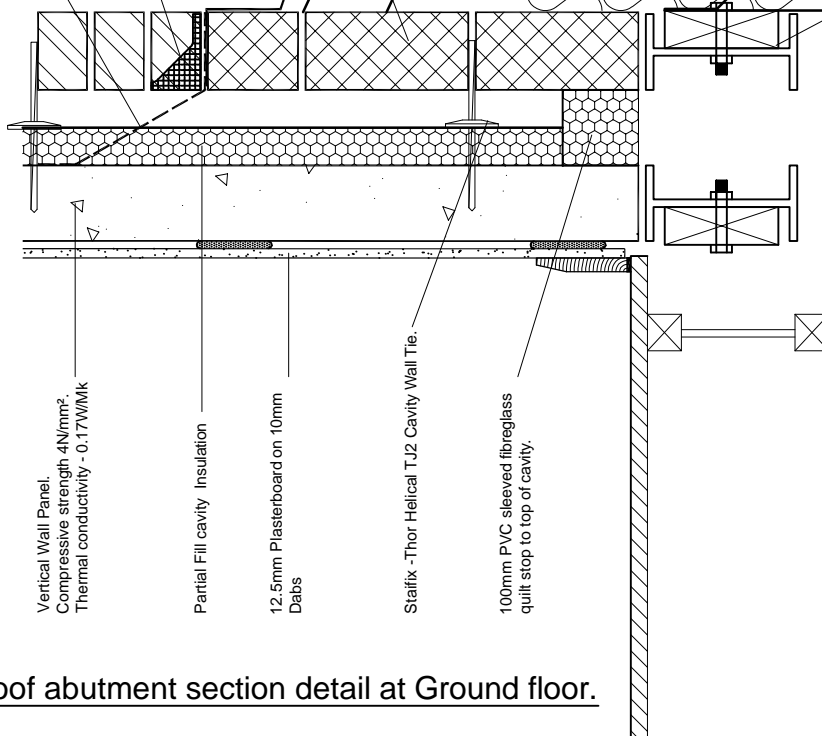
50 x 100 C16 wall plate on 2mm adhesive bed strapped at max. 2m centres with galvanised steel strap 100/1200x30x2.5mm. Fixed to top of H+H Vertical Wall Panel with Helifix Turbofast of H+H Vertical Wall Panel. Fixings positioned at 8mmØx150mm fixings. Fixings positioned at 600mm centres along full length and ensure 1 per Vertical Wall Panel. Wall plate to be a minimum 2m lengths and lap jointed at all connections

Eaves protector to prevent roof membrane sagging and ponding.

Site specific eaves detailing.

15mm Gyproc Ceiling board (density 10kg/m<sup>3</sup>) with 3mm skim finish or taped and jointed fixed to underside of timber joists.

I section steel beams under each leaf, solid blocking tightly fixed to webbing and joist hanger attached.



Vertical Wall Panel.  
Compressive strength 4N/mm<sup>2</sup>.  
Thermal conductivity - 0.17W/Mk

Partial Fill cavity Insulation

12.5mm Plasterboard on 10mm Dabs

Stairfix -Thor Helical T.J2 Cavity Wall Tie.

100mm PVC sleeved fibreglass quilt stop to top of cavity.

Lean-to roof abutment section detail at Ground floor.

REV.	DATE.	DESCRIPTION.	BY.

These details have been produced for guidance only. It is the responsibility of the building designer to ensure that the details shown are compatible with the overall building design and will satisfy the relevant parts of the Building Regulations applicable before they are adopted into the project design.



H+H UK Limited  
Technical Services Dept.  
Celcon House  
Ightham, Sevenoaks  
Kent, TN15 9HZ.  
Tel +44 (0)1732 880580  
Email tsd@hhcelcon.co.uk

TITLE Vertical Wall Panel detail  
Lean-to roof section

DWG No. VED067

DRAWN BY MAB CHECKED BY SJK

DATE 13/8/21 SCALE 1:100 REV.NO. 00